



20  
17

ANNUAL  
REPORT



**GROWTH** THROUGH COMMUNITY ENGAGEMENT



The Corporation is guided by four fundamental principles:

## Equity, Transparency, Accountability & Integrity

### GOALS AND OBJECTIVES

The goals and objectives of the Northern Lights Community Development Corporation are “to facilitate the distribution of a portion of net proceeds derived from the Northern Lights Casino (or any successor thereof) located at the Peter Ballantyne Reserve No. 220, for charitable purposes to First Nations and Non-First Nations charities and organizations in the community in which the Corporation is located and in the surrounding areas (Bylaw No 1, Northern Lights Community Development Corporation, p.2)”

### MISSION STATEMENT

The Northern Lights Community Development Corporation (NLCDC) mission is to promote the well-being of communities and organizations through financial contribution.

### VISION STATEMENT

To achieve healthy, prosperous and sustainable communities.

“ The Northern Lights Community Development Corporation has completed another successful year with an Annual donation of \$7,096,480 in support of First Nations and non First Nations Community Projects ”



On behalf of the Board of Directors of the Northern Lights Community Development Corporation, I am pleased to provide the Annual Report for 2016-2017.

The funds flow from 25% of net profits of the Northern Lights Casino. The success of the Northern Lights Casino allows the Northern Lights Community Development Corporation to distribute contributions within our catchment area.

In conclusion, it has been an honour to sit as Chairman of the Northern Lights Community Development. I would also like to thank our General Manager - Blake Charles and our dedicated Staff; Jocelyn Longjohn - Reception, Judy Quong - Finance who take directions set by the Northern Lights Community Board of Directors.

Ekosi,

Gerald McKay  
Chair Person of NLCDC Board

The Northern Lights Community Development Corporation has completed another successful year with an Annual donation of \$7,096,480 in support of First Nations and non First Nations Community Projects.

It is this distribution of grants to the communities that measures the success of attaining goals and objectives of the Northern Lights Community Development Corporation.





We at the Northern Lights Community Development Corporation are pleased to provide our 2017 Annual Report.

Our board of directors have worked along with the staff to ensure

the success of our CDC and to continue providing funds to many worthwhile projects throughout our catchment area.

There have been concentrated efforts among the CDC's throughout Saskatchewan to work together and share some projects that extend beyond the capacity of an individual CDC. We continue to seek ways to advance the operations of our Community Development Corporations into the foreseeable future.

Northern Lights Community Development Corporation is guided by four fundamental principles: Equity; Transparency; Accountability; and Integrity.

Northern Lights Community Development Corporation receives 25% of the net profits from the Northern Lights Casino of which over 90% is directly distributed to projects in Community Contributions throughout our catchment area and beyond.

The NLCDC Board and Staff is focused on making a difference for the long term.

Ikosi Māka,

Blake Charles  
NLCDC General Manager

NLCDC STAFF



Blake Charles

Blake has a B.Ed degree, a graduate degree in Educational Foundations and a Masters in Northern Development and Governance. He is currently serving his third term as the GM of NLCDC.



Judy Quong

Born and raised in Prince Albert, Judy has many years experience in the Finance field. She has been involved with NLCDC since 2002, initially on a contract basis and now as a full-time staff member.



Jocelyn Longjohn

Jocelyn is a member of the Sturgeon Lake First Nation. Jocelyn started with Prince Albert Grand Council in 1998 and later transferred to NLCDC in 2006.



Gerald McKay

Gerald McKay is a member of the James Smith Cree Nation; and is currently serving as Headman of his community.



Eric Sylvestre

Eric Sylvestre is a member of the Birch Narrows Dene Nations and is currently serving his third term as Tribal Chief of Meadow Lake Tribal Council. Prior to becoming Tribal Chief, Eric was vice chief for 9 years.



Joseph Tsannie

Joseph Tsannie is a member of the Hatchet Lake Denesuline Nation. He is currently serving his second term as Vice Chief for the Prince Albert Grand Council.



Rick Robillard

Rick Robillard is a member of the Black Lake Dene Nation and is the representative for the Athabasca sector.



Lorne Stewart

Lorne Stewart is a member of the Cumberland House Cree Nation; and he was chief for three terms of his community.



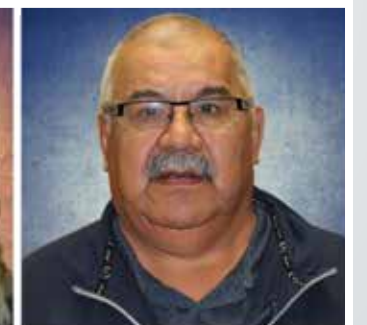
Yvonne Longjohn

Yvonne Longjohn is a member of the Sturgeon Lake First Nation, she has been the elder for NLCDC since 2010.



Jayne Remenda

Jayne has twenty-five years leadership, management, marketing, promotions and event planning experience. She's a former City Councillor and has been a Board Member since 2009.



Ron Michel

Grand Chief Ron Michel is a member of the Peter Ballantyne Cree Nation. He was elected in October 2005 and currently serving his final term as Grand Chief.



Steven Jim

Steven Jim is a member of the Witchehan Lake Band; of which he has served as Chief for the past 10 years. He was recently elected and served one term as Tribal Rep for Agency Chiefs Tribal Council.



Tammy Cook-Searson

Tammy Cook-Searson is a member of the Lac La Ronge Indian Band and has been Chief since 2005. Prior to becoming a chief, she was a councillor for her First Nation for eight (8) years.



Peter A. Beatty

Peter A Beatty is a Peter Ballantyne Cree Nation member from the community of Deschambault Lake. He has served his community as a Councillor for 10 consecutive terms and in March 2015 elected to his second term as Chief.



Shirley Henderson

Shirley Henderson is a member of the Montreal Lake Cree Nation. She has been involved with PAGC Women's Commission since its inception and currently serves as their Chairperson. Shirley is one of the original Board members for NLCDC.



# Fourth Annual Brabant Cultural Camp

By Gill Gracie

For Sally Milne and her four siblings, Brabant Lake is a special place. It's where her parents and grandparents lived and made their living, and although Sally and her siblings now live in Stanley Mission, they still feel strong ties to the land.

## Long time on the land

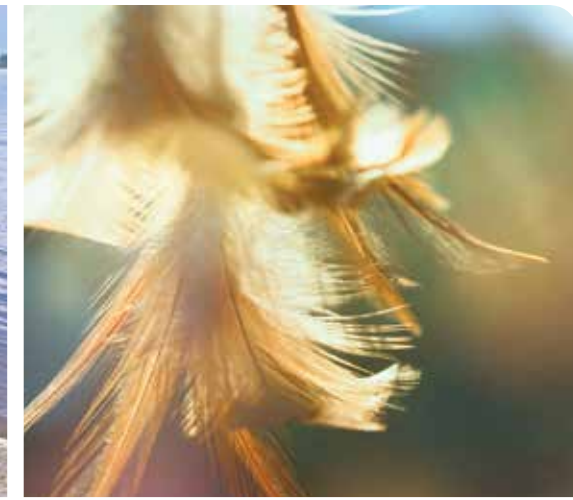
For Sally (73) and her siblings, five left of ten, going back to the land was the most important aspect of the camp. She and brothers Jeho McKenzie (the oldest at 80), Moses McKenzie (70), Ben McKenzie (69) and sister Barb Sinclair (66), remember the old days when they travelled by canoe all summer and dog-team all winter.

All five were raised in the area, where their family had trap-lines for generations. They want to make sure

people know that these are their traditional lands, and that there is evidence of occupation dating back 2,500 years.

An excavation by the Royal Saskatchewan Museum in 1998, following two forest fires in 1987 and 1995 that laid the hills bare, found evidence of quartz quarries, tool production areas, spear points, pottery-making, and signs of ceremonial activities. Ben McKenzie himself discovered a 2,500-year-old Early Talthelie spear point, as well as knife points from 1906, 1919 and 1938. "We've always been here," he says.

They also found a circle of seven fireplaces, which Sally feels represent the seven teachings of love, respect, honesty, peace, patience, courage and wisdom.





# Inaugural MLCN Youth Cultural Camp at Paspiwin Heritage Site

By Ron Merasty

The week of July 4-7, 2016 had Montreal Lake Cree Nation hosting a youth cultural camp at the Paspiwin Heritage Cultural Site at the southeast end of Prince Albert National Park. Approximately 80 youth enjoyed a number of well planned activities throughout four days at the 229 hectare location.

Formerly known as the “Bison (or Buffalo) Paddock” that held a number of wild bison beginning in the 1930s, it was decommissioned in 1995. Around that

time ceremonial sites were discovered there and it eventually became set aside as a location where Indigenous people, including Metis, upon application, could hold ceremonial events.

The site was named by the late Sturgeon Lake First Nation Elder, Bill Ermine, which translates from Cree as “The act of successfully escaping or eluding danger; clearance; survival.”





# Voices of the north

By Sheryl Kimbley - Producer

Many years ago in 1993 a small group of people decided that they wanted to create a stage unlike one they had seen anywhere else. A stage where aboriginal people could gather and showcase their talents. A place where we could celebrate our strengths through culture and entertainment and show a positive role model.

From that beginning 25 years ago, we have grown to a show that is invited all over Saskatchewan and beyond throughout the year. We have also included a workshop and show that caters to our northern youth as well called Northern Spirits. We now boast a cast

of over 1200 and have been referring bands, dancers and singers on a constant basis.

The cost to do this show and ensure we do the very best by our performers, we hire the very best in production and work hard all year to make it happen. One of the biggest thanks we will give is to NLCD C for believing us and sponsoring our event.

On behalf of VOTN, Northern Spirits and our Musqua Entertainment board we wish to say thank you again and again!





## To the Members of Northern Lights Community Development Corporation:

Management is responsible for the preparation and presentation of the accompanying financial statements, including responsibility for significant accounting judgments and estimates in accordance with Canadian accounting standards for not for profit organizations and ensuring that all information in the annual report is consistent with the statements. This responsibility includes selecting appropriate accounting principles and methods, and making decisions affecting the measurement of transactions in which objective judgment is required.

In discharging its responsibilities for the integrity and fairness of the financial statements, management designs and maintains the necessary accounting systems and related internal controls to provide reasonable assurance that transactions are authorized, assets are safeguarded and financial records are properly maintained to provide reliable information for the preparation of financial statements.

The Board of Directors is composed entirely of Directors who are neither management nor employees of the Corporation. The Board is responsible for overseeing management in the performance of its financial reporting responsibilities, and for approving the financial

information included in the annual report. The Board fulfils these responsibilities by reviewing the financial information prepared by management and discussing relevant matters with management and external auditors. The Board is also responsible for recommending the appointment of the Corporation's external auditors.

MNP LLP, is appointed by the members to audit the financial statements and report directly to them; their report follows. The external auditors have full and free access to, and meet periodically and separately with, both the Board and management to discuss their audit findings.

June 15, 2017



Financial Controller

## To the Members of Northern Lights Community Development Corporation:

We have audited the accompanying financial statements of Northern Lights Community Development Corporation, which comprise the statement of financial position as at March 31, 2017, and the statements of operations, changes in net assets and cash flows for the year then ended, and a summary of significant accounting policies and other explanatory information.

### ***Management's Responsibility for the Financial Statements***

Management is responsible for the preparation and fair presentation of these financial statements in accordance with Canadian accounting standards for not for profit organizations, and for such internal control as management determines is necessary to enable the preparation of financial statements that are free from material misstatement, whether due to fraud or error.

### ***Auditors' Responsibility***

Our responsibility is to express an opinion on these financial statements based on our audit. We conducted our audit in accordance with Canadian generally accepted auditing standards. Those standards require that we comply with ethical requirements and plan and perform the audit to obtain reasonable assurance about whether the financial statements are free from material misstatement.

An audit involves performing procedures to obtain audit evidence about the amounts and disclosures in the financial statements. The procedures selected depend on the auditors' judgment, including the assessment of the risks of material misstatement of the financial statements, whether due to fraud or error. In making those risk assessments, the auditor

considers internal control relevant to the entity's preparation and fair presentation of the financial statements in order to design audit procedures that are appropriate in the circumstances, but not for the purpose of expressing an opinion on the effectiveness of the entity's internal control. An audit also includes evaluating the appropriateness of accounting policies used and the reasonableness of accounting estimates made by management, as well as evaluating the overall presentation of the financial statements.

We believe that the audit evidence we have obtained is sufficient and appropriate to provide a basis for our audit opinion.

### ***Opinion***

In our opinion, the financial statements present fairly, in all material respects, the financial position of Northern Lights Community Development Corporation as at March 31, 2017 and the results of its operations and its cash flows for the year then ended in accordance with Canadian accounting standards for not for profit organizations.

Prince Albert, Saskatchewan

June 15, 2017



Chartered Professional Accountants

Statement of Financial Position  
As at March 31, 2017

	2017	2016
<b>ASSETS</b>		
<b>Current</b>		
Cash	1,891,551	2,263,846
Reserve cash (Note 2)	671,787	497,943
Accounts receivable	2,060	4,138
Prepaid expenses and deposits	5,567	1,424
	2,570,965	2,767,351
Capital assets (Note 3)	27,173	37,707
	2,598,138	2,805,058
<b>LIABILITIES</b>		
<b>Current</b>		
Accounts payable and accruals	20,361	15,022
Community contributions payable	1,878,817	2,254,386
	1,899,178	2,269,408
<b>NET ASSETS</b>		
Internally restricted net assets (Note 2)	671,787	497,943
Invested in capital assets	27,173	37,707
	698,960	535,650
	2,598,138	2,805,058

Approved on behalf of the Board

Director

Director

Statement of Operations  
For the year ended March 31, 2017

	2017	2016
<b>REVENUE</b>		
Gaming proceeds	7,719,426	7,579,318
Interest income	6,383	7,039
<b>Total revenue</b>	<b>7,725,809</b>	<b>7,586,357</b>
<b>DIRECT EXPENSES</b>		
Salaries and benefits	148,163	153,525
Advertising	13,890	2,970
Information technology	4,384	2,880
Office supplies	3,600	2,479
Professional services	2,883	332
	172,920	162,186
<b>GOVERNANCE EXPENSES</b>		
Board governance	198,899	218,647
Meeting costs	8,882	10,489
Board development	—	10,262
Insurance	4,360	4,000
	212,141	243,398
<b>ADMINISTRATION EXPENSES</b>		
Salaries and benefits	148,163	153,525
Management fees	60,245	39,627
Promotions	55,665	51,884
Sponsorships and donations	55,050	44,480
Rent and occupancy	37,419	37,420
Advertising	24,230	29,814
Amortization	21,310	14,935
Travel	14,174	19,315
Professional development	10,879	11,938
Professional services – audit	10,756	13,534
Telephone and cellular	7,852	8,151
Office supplies	5,638	4,789
Professional services – legal	3,499	9,094
Repairs and maintenance	2,359	3,200
Bank charges and interest	586	651
Minor equipment	—	348
	457,825	442,705
<b>COMMUNITY CONTRIBUTIONS</b>		
Community contributions	7,096,480	6,880,902
De-committed community contributions	(376,867)	—
	6,719,613	6,880,902
<b>Total expenses</b>	<b>7,562,499</b>	<b>7,729,191</b>
Excess of revenue over expenses before other items	163,310	(142,834)
<b>Other items</b>		
Gain on the sale of capital assets	—	1,024
<b>Excess of revenue over expenses</b>	<b>163,310</b>	<b>(141,810)</b>

Statement of Changes in Net Assets  
For the year ended March 31, 2017

	Invested in capital net assets	Internally restricted	Unrestricted assets	2017	2016
Net assets, beginning of year	37,707	497,943	—	535,650	677,460
Excess (deficiency) of revenues over expenses	(21,310)	—	184,620	163,310	(141,810)
Net purchase of capital assets	10,776	—	(10,776)	—	—
Net transfer to (from) internally restricted net assets (note 2)	—	173,844	(173,844)	—	—
Net assets, end of year	27,173	671,787	—	698,960	535,650

Statement of Cash Flows  
For the year ended March 31, 2017

	2017	2015
<b>Cash provided by (used for) the following activities Operating</b>		
Excess of revenue over expenses	163,310	(141,810)
Amortization	21,310	14,935
Gain (loss) on disposal of capital assets	—	(1,024)
De committed community contributions	(376,867)	—
	(192,247)	(127,899)
Changes in working capital accounts		
Accounts receivable	2,078	1,881
Prepaid expenses and deposits	(4,143)	(349)
Accounts payable and accruals	5,339	1,366
Community contributions payable	1,298	300,833
	(187,675)	175,832
<b>Investing</b>		
Purchase of capital assets	(10,776)	(52,340)
Proceeds on disposal of capital assets	—	15,000
	(10,776)	(37,340)
<b>Increase (decrease) in cash resources</b>	<b>(198,451)</b>	<b>138,492</b>
<b>Cash resources, beginning of year</b>	<b>2,761,789</b>	<b>2,623,297</b>
<b>Cash resources, end of year</b>	<b>2,563,338</b>	<b>2,761,789</b>
<b>Cash resources are composed of:</b>		
Cash	1,891,551	2,263,846
Reserve cash	671,787	497,943
	2,563,338	2,761,789

Notes to the Financial Statements  
For the year ended March 31, 2017

**1. Incorporation and nature of the organization**  
Northern Lights Community Development Corporation (“the Corporation”) was incorporated under the Non profit Corporations Act, 1995, of Saskatchewan and thus is exempt from income taxes under Part I of the Income Tax Act (“the Act”). In order to maintain its status as a registered not for profit organization under the Act, the Corporation must meet certain requirements within the Act. In the opinion of management these requirements have been met.

The Corporation's purpose is to distribute funds for charitable purposes to First Nations charities and organizations and Non First Nations charities and organizations in the communities in which the Corporation is located and in the surrounding area. The Corporation receives funding from the Government of Saskatchewan as a distribution of a portion of net proceeds derived from the Northern Lights Casino.

**2. Significant accounting policies**  
The financial statements have been prepared in accordance with Canadian accounting standards for not for profit organizations set out in Part III of the CPA Canada Handbook Accounting, as issued by the Accounting Standards Board in Canada, and include the following significant accounting policies:

**Cash and cash equivalents**  
Cash and cash equivalents include balances with banks and short term investments with maturities of three months or less. Cash subject to restrictions that prevent its use for current purposes is included in reserve cash.

**Capital assets**  
Purchased capital assets are recorded at cost. Contributed capital assets are recorded at fair value at the date of contribution if fair value can be reasonably determined. Amortization is provided using the various method at rates intended to amortize the cost of assets over their estimated useful lives

	Method	Rate
Automotive	straight line	30 %
Computer equipment	straight line	40 %
Equipment	straight line	5 years
Leasehold improvements	straight line	5 years

**Internally restricted funds**  
In 2017, the Corporation's board of directors internally restricted \$671,787 (2016 - \$497,943) of unrestricted net assets to be used for emergency funding. The board of directors also has internally restricted net assets invested in capital assets of \$27,173 (2016 - \$37,707). These internally restricted amounts are not available for other purposes without approval by the board of directors.

**Revenue recognition**  
The Corporation follows the deferral method of accounting for contributions. Restricted contributions are recognized as revenue in the year in which the related expenses are incurred. Unrestricted contributions are recognized as revenue when received or receivable if the amount to be received can be reasonably estimated and collection is reasonably assured.



Allocation of expenses

The Corporation incurs a number of general support expenses that are common to the administration of the Corporation.

Salaries and benefits expense reported in the statement of operations of \$296,321 (2016 – \$307,050) are reported after allocation of 50% (2016 – 50%) between direct and administration expenses. Office supplies expenses reported in the statement of operations of \$8,521 (2016 – \$7,267) are reported after allocation of \$2,883 (2016 – \$2,479) to direct expenses. Advertising expenses reported in the statement of operations of \$38,120 (2016 – \$32,784) are reported after allocation of \$13,890 (2016 – \$2,970) to direct expenses.

2. Significant accounting policies

Community contributions

The Corporation meets its objectives by providing charitable contributions to First Nations charities and organizations and Non First Nations charities and organizations. The Corporation holds back a percentage of funding approved for charitable contributions until the recipient organizations provide reporting on the use of funds. As at March 31, 2017 the Corporation de committed \$376,867 (2016 – \$nil) of these holdbacks payable as no reporting was received from recipient organizations.

Measurement uncertainty

The preparation of financial statements in conformity with Canadian accounting standards for not for profit organizations requires management to make estimates and assumptions that affect the reported amounts of assets and liabilities and disclosure of contingent assets and liabilities at the date of the financial statements, and the reported amounts of revenues and expenses during the reporting period.

Accounts receivable are stated after evaluation as to their collectability and an appropriate allowance for doubtful accounts is provided where considered necessary. Amortization is based on the estimated useful lives of capital assets.

These estimates and assumptions are reviewed periodically and, as adjustments become necessary they are reported in excess of revenues and expenses in the periods in which they become known.

Financial instruments

The Corporation recognizes its financial instruments when the Corporation becomes party to the contractual provisions of the financial instrument. All financial instruments are initially recorded at their fair value, including financial assets and liabilities originated and issued in a related party transaction with management. Financial assets and liabilities originated and issued in all other related party transactions are initially measured at their carrying or exchange amount in accordance with CPA Canada 3840 Related Party Transactions (refer to Note 4).

At initial recognition, the Corporation may irrevocably elect to subsequently measure any financial instrument at fair value. The Corporation has not made such an election during the year. Fair value is determined by using recent arm's length transactions.

Transaction costs and financing fees directly attributable to the origination, acquisition, issuance or assumption of financial instruments subsequently measured at fair value are immediately recognized in the excess of revenues over expenses for the current period. Conversely, transaction costs and financing fees are added to the carrying amount for those financial instruments subsequently measured at amortized cost or cost.

Financial asset impairment:

The Corporation assesses impairment of all of its financial assets measured at cost or amortized cost. The Corporation groups assets for impairment testing when available information is not sufficient

to permit identification of each individually impaired financial asset in the group, there are numerous assets affected by the same factors, or no asset is individually significant. Management considers whether there has been a breach in contract, such as a default or delinquency in interest or principal payments in determining whether objective evidence of impairment exists. When there is an indication of impairment, the Corporation determines whether it has resulted in a significant adverse change in the expected timing or amount of future cash flows during the year. If so, the Corporation reduces the carrying amount of any impaired financial assets to the highest of: the present value of cash flows expected to be generated by holding the assets; the amount that could be realized by selling the assets; and the amount expected to be realized by exercising any rights to collateral held against those assets. Any impairment, which is not considered temporary, is included in current year excess of revenues over expenses.

The Corporation reverses impairment losses on financial assets when there is a decrease in impairment and the decrease can be objectively related to an event occurring after the impairment loss was recognized. The amount of the reversal is recognized in the excess of revenue over expenses in the year the reversal occurs.

3. Capital assets			2017	2016
	Cost	Accumulated amortization	Net book value	Net book value
Automotive	48,115	28,421	19,694	34,129
Computer equipment	11,696	6,847	4,849	—
Equipment	29,074	26,444	2,630	3,578
Leasehold improvements	31,686	31,686	—	—
	120,571	93,398	27,173	37,707

4. Related party transactions

During the year, the Corporation purchased services from entities that are under common control and/or influence as follows:

Prince Albert Grand Council Administration Services Agreement in the amount of \$390,882 (2016 – \$379,851). The annual fee is based on the annual budget approved by the Northern Lights Community Development Corporation's Board of Directors. This agreement expired on March 31, 2017.

As well during the year, the Corporation distributed funds to various First Nation groups which have representation on the Board of Directors of the Corporation. These transactions were in the normal course of operations and were measured at the exchange amount, which is the amount of consideration established and agreed to by the related parties.

5. Financial instruments

The Corporation, as part of its operations, carries a number of financial instruments. It is management's opinion that the Corporation is not exposed to significant interest, currency, credit, liquidity or other price risks arising from these financial instruments except as otherwise disclosed

Interest rate risk

Interest rate risk is the risk that the value of a financial instrument might be adversely affected by a change in the interest rates. Changes in market interest rates may have an effect on the cash flows associated with some financial assets and liabilities, known as cash flow risk, and on the fair value of other financial assets or liabilities, known as price risk.

The Corporation is exposed to interest rate risk with respect to cash in the bank, all of which are expected to be realized within one year, and which are subject to floating interest rates..

NLCDC 2016 - 17 PROJECTS

COMMUNITY INFRASTRUCTURE

FIRST NATION/ORGANIZATION

Agency Chiefs Tribal Council  
Agency Chiefs Tribal Council  
Agency Chiefs Tribal Council  
Beardy's & Okemasis First Nation  
Beardy's & Okemasis First Nation  
Beardy's & Okemasis First Nation  
Big River First Nation  
Big River First Nation  
Big River First Nation  
Big River First Nation  
Birch Narrows Dene Nation  
Birch Narrows Dene Nation  
Birch Narrows Dene Nation  
Birch Narrows Dene Nation  
Black Lake First Nation  
Black Lake First Nation  
Canoe Lake Cree First Nation  
Carlton Community Hall Inc  
Cumberland House Cree Nation  
Cumberland House Cree Nation  
Eagle's Lake Cree First Nation  
East Hill Community Club  
Flying Dust First Nation  
Flying Dust First Nation  
Flying Dust First Nation  
Flying Dust First Nation  
Fond du Lac First Nation  
Fond du Lac First Nation  
Hatchet Lake First Nation  
James Smith Cree Nation  
James Smith Cree Nation  
Laplonge First Nation  
Laplonge First Nation  
LLRIB Grandmother's Bay  
LLRIB Grandmother's Bay  
LLRIB Hall Lake  
LLRIB Hall Lake  
LLRIB La Ronge  
LLRIB La Ronge  
LLRIB La Ronge  
LLRIB La Ronge  
LLRIB La Ronge  
LLRIB La Ronge  
LLRIB La Ronge  
LLRIB Little Red  
LLRIB Little Red  
LLRIB Little Red  
LLRIB Stanley Mission  
LLRIB Stanley Mission  
LLRIB Stanley Mission  
LLRIR Sucker River  
Meadow Lake Tribal Council  
Meadow Lake Tribal Council  
Meadow Lake Tribal Council  
Meadow Lake Tribal Council  
Meadow Lake Tribal Council  
Meadow Lake Tribal Council  
Ministikiwan Lake Cree Nation  
North East Outreach  
Northern Regional Rec Centre  
PBCN Deschambault Lake  
PBCN Deschambault Lake  
PBCN Deschambault Lake  
PBCN Deschambault Lake  
PBCN Pelican Narrows  
PBCN Sandy Bay  
PBCN Sandy Bay  
PBCN Southend  
PBCN Southend  
PBCN Sturgeon Landing  
PBCN Sturgeon Landing  
PBCN Sturgeon Landing  
PBCN Sturgeon Landing  
Pelican Lake First Nation  
Pelican Lake First Nation  
Prince Albert Grand Council  
Red Earth Cree Nation

PROJECT

Purchase of Company Vehicle  
Office Furniture  
Company Vehicles  
BOFN Zamboni Purchase  
Sports & Rec Van Improvements  
Minor Renovations & Improvements  
Daycare Centre Final Loan Payment  
Purchase of New Sewer Truck  
Purchase of Bale Processor  
Purchase of School Sound System  
Community Gazebo  
Daycare Van Repairs  
Bus Repairs  
Traditional Territory Land Use  
Potable Water Truck  
Sanitation Truck  
Backhoe & Loader Purchase  
New Siding  
Pine Bluff Restoration  
Pine Bluff Restoration  
Backhoe & Loader Purchase  
Furnace Replacement  
Commercial Development  
Truck & Equipment Purchase  
Grader Upgrade  
Elder Home Fit Up  
Sewer Truck  
Community Service Loader  
Cochrane River School Reno  
Equipment Compound  
Website Update  
Community Clean Up  
Purchase of Used Grader  
Security System  
Elder Housing Improvement  
Community Dock & Rec Area  
Local Volunteer Fire Fighters  
Housing & Community Fencing  
Storage Unit  
Far Reserve Bells Point Walkway  
Community Clean Up  
JRMCC Boardwalk Ph III  
Bells Point Outdoor Sports Area  
Morin Hill Youth Centre  
Community Clean Up  
Big Stone Youth Centre  
Band Hall Kitchens Upgrades  
Elder's Furnishing Project  
Band Office Computer Upgrades  
Fire Crew Truck  
Dozer Purchase  
Church Renovations  
Dozer Purchase  
Community Van Purchase  
Server Room Upgrades  
Fibre Optic Connection  
Wireless Sound System  
Installation of Modular Offices  
Electrical Generator  
IT Building Heating & Cooling  
Fire Hall & Truck  
Future Hope Capital Campaign  
Plant Upgrades  
Tiny House Build  
Portage Clearing  
Elder Home Improvement  
Band Office Upgrade  
Traditional Trails & Portage Clearing  
Cemetery Community Clean Up  
Outdoor Arena Maintenance  
Fire Hall Equipment  
Band Hall Office Equipment  
Band Hall Renovations  
Community Clean Up  
Community Utility Vehicle  
Multi-purpose Van  
Church Project  
Trackhoe Purchase  
Fourplex Upgrades  
Computer System Upgrade

Red Earth Cree Nation  
Red Earth Cree Nation  
Red Earth Cree Nation  
Red Earth Cree Nation  
Shoal Lake Cree Nation  
Shoal Lake Cree Nation  
Sturgeon Lake First Nation  
Sturgeon Lake First Nation  
Sturgeon Lake First Nation  
Sturgeon Lake First Nation  
Sturgeon Lake First Nation  
Victoria Hospital Foundation  
Wahpeton Dakota Nation  
Wahpeton Dakota Nation  
Wahpeton Dakota Nation  
Wahpeton Dakota Nation  
Wahpeton Dakota Nation  
Wahpeton Dakota Nation  
Waterhen Lake First Nation  
Waterhen Lake First Nation  
West Flat Citizens Group  
Witchekan First Nation  
Witchekan First Nation

ABE Van  
Vehicle Purchase  
1A Server  
Homecare Van  
Computer Software Purchase  
Trapper's Cabin  
School Bus Purchase  
Caterpillar Motor Grader  
Community Hall Upgrades  
Band Office Upgrade  
Adult Education Office Upgrade  
Fleet Management  
Give a Little Life Day  
Pow Wow Arbor  
Community Kitchen Upgrade  
Inspection Report Upgrades  
Youth Empowerment Centre  
New Bleachers for Pow Wow Arbor  
Outdoor Youth Skate Park  
Purchase of Sewer/Vacuum Truck  
Gravel Truck  
Bernice Sayese Centre  
Van Purchase  
Computer & Office Equipment

ECONOMIC DEVELOPMENT

FIRST NATION/ORGANIZATION

Agency Chiefs Tribal Council  
Flying Dust First Nation  
James Smith Cree Nation  
LLRIB Hall Lake  
PA District Chamber of Commerce  
PBCN Pelican Narrows  
PBCN Pelican Narrows  
Prince Albert Grand Council  
Prince Albert Grand Council  
Prince Albert Grand Council  
Prince Albert Grand Council  
Prince Albert Grand Council  
Red Earth Cree Nation  
Red Earth Cree Nation

PROJECT

Purchase of Industrial Sewing Machine  
Power Generation Development  
Tri Nations Convenience Store  
Ec Dev Initiatives  
2017 Ec Dev Forum  
Wapawikosikan Sawmill  
Sawmill Project  
NRTA  
Treaty & Constitutional Workshop  
Nuclear Safety  
SK Indigenous Gaming Forum  
Northern SK Fisheries  
Wild Rice Pilot Project  
Outfitting Bylaw

SOCIAL DEVELOPMENT

FIRST NATION/ORGANIZATION

Canadian Diabetes Association  
LLRIB Grandmother's Bay  
LLRIB La Ronge  
PA Multicultural Council  
PA Share A Meal  
PBCN Kinoosao  
PBCN Kinoosao  
PBCN Urban  
Peter Chapman Band  
Wahpeton Dakota Nation

PROJECT

Travelling Diabetes Resources  
Community Garden  
Women's Empowerment  
Celebrate Canada 2016  
All Nations Cooking Together  
Health & Wellness Retreat  
Gathering  
Training Program  
Health 2017  
Positive Notes with Musical Notes

CULTURE

FIRST NATION/ORGANIZATION

Agency Chiefs Tribal Council  
Beardy's & Okemasis Band  
Big River First Nation  
Birch Narrows Dene Nation  
Birch Narrows Dene Nation  
Canoe Lake Cree First Nation  
Chakastaypasin Band  
Cumberland House Cree Nation  
Eagle's Lake First Nation  
English River First Nation  
English River First Nation  
First Nations University of Canada  
Hatchet Lake Dene Nation  
Hatchet Lake Dene Nation  
James Smith Cree Nation  
James Smith Cree Nation  
James Smith Cree Nation  
La Plonge First Nation  
Lac La Ronge Indian Band  
LLRIB Grandmother's Bay  
LLRIB Grandmother's Bay  
LLRIB Grandmother's Bay  
LLRIB Grandmother's Bay  
LLRIB Grandmother's Bay  
LLRIB Grandmother's Bay  
LLRIB Hall Lake  
LLRIB Hall Lake

PROJECT

Cultural Awareness  
2016 Pow Wow  
Elder's Cultural Christmas  
Family Camp  
2017 BNDN Winter Carnival  
Cultural Activity  
Cultural Activity  
Cultural Activity  
Cultural Activity  
St Anne Pilgrimage  
Winter Festival  
Elder's Traditional Crafts  
Cultural Gathering  
Knowledge & Survivor Trip  
2016 Pow Wow  
Southern Sector Gathering  
Winter Festival  
Cultural Activity  
Woodland Cree Gathering  
Youth Cultural Camp  
Community Hall Gathering  
Youth Cultural Camp  
Winter Festival  
Youth Cultural Festival  
Cultural Gathering  
Community Christmas Banquet  
Trappers Festival



(Culture Cont.)

LLRIB Hall Lake  
LLRIB La Ronge  
LLRIB La Ronge  
LLRIB La Ronge  
LLRIB La Ronge  
LLRIB La Ronge  
LLRIB La Ronge  
LLRIB La Ronge  
LLRIB Little Red  
LLRIB Little Red  
LLRIB Stanley Mission  
LLRIB Sucker River  
LLRIB Sucker River  
LLRIB Sucker River  
LLRIB Sucker River  
Makwa Sahgaiehcan First Nation  
Meadow Lake Tribal Council  
Ministikwan Lake Cree Nation  
MLCN Little Red  
Montreal Lake Cree Nation  
Montreal Lake Cree Nation  
Musqua Entertainment  
Northern Lights Casino  
PA Multicultural Council  
PA Winter Festival Society  
PAIMFC  
PBCN Pelican Narrows  
PBCN Sandy Bay  
PBCN Denare Beach  
PBCN Denare Beach  
PBCN Denare Beach  
PBCN Deschambault Lake  
PBCN Kinoosao  
PBCN Pelican Narrows  
PBCN Pelican Narrows  
PBCN Pelican Narrows  
PBCN Sandy Bay  
PBCN Sandy Bay  
PBCN Sandy Bay  
PBCN Sandy Bay  
PBCN Sandy Bay  
PBCN Sandy Bay  
PBCN Southend  
PBCN Sturgeon Landing  
PBCN Sturgeon Landing  
PBCN Urban  
PBCN Urban  
PBCN Urban  
PBCN Urban  
PBCN Urban  
Pelican Lake First Nation  
Peter Ballanyrne Cree Nation  
Peter Chapman Band  
Peter Chapman Band  
Peter Chapman Band  
Prince Albert Grand Council  
Prince Albert Grand Council  
Prince Albert Grand Council  
Prince Albert Grand Council  
Red Earth Cree Nation  
Riverside Public School  
Shoal Lake Cree Nation  
Shoal Lake Cree Nation  
Shoal Lake Cree Nation  
Shoal Lake Cree Nation  
Sturgeon Lake Cree Nation  
Sturgeon Lake Cree Nation  
Sturgeon Lake Cree Nation  
Sturgeon Lake Cree Nation  
Sturgeon Lake First Nation  
Wahpeton Dakota Nation  
Wahpeton Dakota Nation  
Wahpeton Dakota Nation  
Waterhen Lake First Nation  
Witchekan Lake First Nation  
Witchekan Lake First Nation  
Witchekan Lake First Nation

Cultural Gathering  
2016 Elder's Gathering  
Cultural & Summer Camps  
Women's Cultural Camp  
Winter Festival  
Community Artisan Project  
Community Youth Wellness  
Community Christmas Banquet  
Community Artisan Project  
Cultural Gathering  
Community Christmas Banquet  
Cultural Activity  
Cultural Camp  
Community Fish Derby  
Winter Festival  
Cultural Gathering  
Treaty Day Celebration  
Cultural Activity  
Treaty Day  
Annual Cultural Days  
Molanosa Days  
Woodland Cree Gathering  
Voices of the North  
Thanksgiving Pow Wow  
Tapestrama Cultural Festival  
2017 PA Winter Festival  
National Aboriginal Day  
Treaty Day Celebrations  
Elders Gathering  
Cultural Gathering  
Amisk Lake Christmas Party  
Cultural Days  
Treaty Day Celebrations  
Cultural Events  
Treaty Day Celebrations  
Christmas Parade  
39th Annual Winter Festival  
Fall Cultural Gathering  
Hector Thiboutot School  
Winter Festival  
Cultural Gathering  
Cultural Gathering  
Cultural Activity  
Elder's Gathering  
Treaty Day Celebrations  
Fall Cultural Gathering  
Caribou Cultural Harvest  
Cultural Activity  
Urban Cultural Events  
Cultural Event Lac Eauclaire  
Woodland Cree Gathering  
Pow Wow Dance Class  
Winter Carnival  
Cultural Activity  
2nd Annual Cultural Festival  
Remembrance Day Ceremony  
26th Annual Fine Arts Festival  
Daycare Community Gathering  
Eastern Sector Fish Derby  
Aboriginal Arts Festival  
Family Camp  
Treaty Gathering  
Eastern Sector Fish Derby  
Cultural Community Events  
Southern Sector Gathering  
Pow Wow 2016  
Embrace our Cultural  
Remembering our Urban Members  
Traditional Medicine Camp  
Cultural Activity  
Cultural Activity  
Southern Sector Gathering  
In School Cultural Week  
Cultural Activity  
Pow Wow 2016  
Pow Wow 2016  
Fun Run & Honouring Ceremony

Clearwater River Dene Nation  
Clearwater River Dene Nation  
Eagle's Lake Cree First Nation  
English River First Nation  
English River First Nation  
James Smith Cree Nation  
La Plonge First Nation  
LLRIB Grandmother's Bay  
LLRIB La Ronge  
LLRIB La Ronge  
LLRIB La Ronge  
Makwa Sahgaiehcan First Nation  
Makwa Sahgaiehcan First Nation  
Meadow Lake Tribal Council  
Montreal Lake Cree Nation  
Montreal Lake Cree Nation  
Montreal Lake Cree Nation  
North Central Minor Hockey  
PA Beach Volleyball  
PA First Nations Urban Youth  
PA Ice Hawks  
PA Minor Softball Assoc.  
PA Pee Wee A Aces  
PA Slo Pitch League  
PAGC/NLC Golf Committee  
PAMSA Projects  
PBCN Denare Beach  
PBCN Deschambault Lake  
PBCN Pelican Narrows  
PBCN Sandy Bay  
PBCN Sandy Bay  
PBCN Urban  
PBCN Urban  
Peter Chapman Band  
Peter Chapman Band  
Peter Chapman Band  
Prince Albert Grand Council  
Shoal Lake Cree Nation  
Shoal Lake Cree Nation  
Shoal Lake Cree Nation  
Shoal Lake Cree Nation  
Village of Albertville

Youth Recreational Site  
Recreation Site  
Programming at the Arena  
Playground in Patuanak  
Sports Camp  
U18 Thunderbirds Fastball  
Gym Fitness Project  
Transportation & Rec Equipment  
Sen Myles Venn Athletic Program  
JRMCC Ball Field Upgrade  
Youth Golf Program  
Arena Chiller  
Minor Hockey Raffle  
Makwa Sahgaiehcan Minor Hockey  
Youth Soccer  
ML Celtic Player Development  
Arena Rink Zamboni  
Development  
Construct Volleyball Courts  
Sports Program  
Jr B Hockey Team  
Softball Skills Development  
2017 National Softball Championships  
Diamond Reshaling  
Annual Golf Tournament  
We Play For Shade  
Minor Hockey Tournament  
Hockey Equipment Purchase  
Arena Minor Renovations  
Sports Equipment Upgrades  
Purchase of Recreation Van  
Recreation Program Costs  
Youth Sports Fundraiser  
Minor Hockey  
Winter Sports  
NAIG 2017  
3rd Annual Senators Cup  
Annual Golf Tournament  
2nd Annual Senior Golf  
Novice Tournament  
Minor Hockey  
Playing in the Park

EDUCATION

FIRST NATION/ORGANIZATION	PROJECT
James Smith Cree Nation	Bernard Constant Community School
LLRIB Little Red	ABE Classroom
PA Collegiate Institute	Student Health & Engagement
Prince Albert Grand Council	Scholarship Banquet
Red Earth Cree Nation	Indigenous Education Program

JUSTICE

FIRST NATION/ORGANIZATION	PROJECT
Birch Narrows Dene Nation	Primrose Court Case
Buffalo River Dene Nation	Litigation
Buffalo River Dene Nation	Legal Challenge
LLRIB La Ronge	Justice Initiative
New North SANC Service Inc	Northern Justice Symposium
PBCN Southend	2016-17 Bylaw Enforcement
Prince Albert Grand Council	WC Memorial Walk

HEALTH

FIRST NATION/ORGANIZATION	PROJECT
LLRIB Hall Lake	Women's Wellness Group
LLRIB Hall Lake	Men's Wellness Group
PA Parkland Health Region	Spiritual Room
PA Share A Meal	Greenleaf Project
PBCN Deschambault Lake	Community Garden
WJ Berezowsky Public School	Snack Program
YWCA PA	Nutrition Program

SENIORS & YOUTH

FIRST NATION/ORGANIZATION	PROJECT
Agency Chiefs Tribal Council	Cultural Awareness
Big Brothers & Big Sisters	Big Match Mentoring
Birch Narrows Dene Nation	Lac St Anne Pilgrimage
Canoe Lake Cree First Nation	Elder's Gathering
Canoe Lake Cree First Nation	Youth Centre Programming
Chakastaypasin Band	Elder's Gathering
City of PA Playground	Kidzfest 2017
Cumberland House Cree Nation	Elder's Gathering
Eagle's Lake Cree Nation	Elder's Gathering
Handiworks	Famous People Players
Hatchet Lake Dene Nation	Elder's Gathering
Hatchet Lake Dene Nation	Youth Canoe Quest

RECREATION

FIRST NATION/ORGANIZATION	PROJECT
Aallcann Development	Project Triple Play Ph II
Beardy's & Okemasis First Nation	BOFN Youth Soccer & Transportation
Beardy's & Okemasis First Nation	Camp Tawow Upgrade
Beardy's & Okemasis First Nation	Beardy's Midget AAA Blackhawks
Beardy's & Okemasis First Nation	Midget AAA Blackhawks
Beardy's & Okemasis First Nation	Minor Sports
Beardy's & Okemasis First Nation	FSIN Youth Hockey Championships

(Seniors & Youth Cont.)

James Smith Cree Nation  
James Smith Cree Nation  
Kidsport PA  
La Plonge First Nation  
LLRIB Grandmother's Bay  
LLRIB Hall Lake  
LLRIB La Ronge  
LLRIB La Ronge  
LLRIB Little Red River  
LLRIB Stanley Mission  
LLRIB Sucker River  
Makwa Sahgaiehcan First Nation  
Meadow Lake Tribal Council  
Ministikwan Lake Cree Nation  
MLCN Little Red  
MLCN Little Red  
Montreal Lake Cree Nation  
PA Festival of Dance  
PA Indian Metis Friendship Centre  
PAIMFC  
PBCN Sandy Bay  
PBCN Sturgeon Landing  
PBCN Sturgeon Landing  
PBCN Denare Beach  
PBCN Kinoosao  
PBCN Pelican Narrows  
PBCN Sandy Bay  
PBCN Sandy Bay  
PBCN Sandy Bay  
PBCN Southend  
PBCN Urban

Treaty 6 Gathering  
Horse & Youth Project  
So All Kids Can Play  
La Plonge Elder's Trip  
Elder's Gathering  
Elder's Gathering  
Community Fish Derby  
Elder's Gathering  
Elder's Gathering  
Elder's Gathering  
Elder's Gathering  
Treaty Day Celebration  
Elder's Gathering  
Elder's Gathering  
Oskayak Mamawachitowan 2017  
Elder's Trip  
Elder's Trip  
2017 PA Festival of Dance  
Children's Summer Program  
Children's Summer Program  
Elders Annual Berry Picking Trip  
Elder's Fall Gathering  
Elder's Gathering  
Elder's Gathering  
Elder's Gathering  
Lac St Anne Pilgrimage  
Elder's Wood Heating Program  
Annual Youth Hunting Trip  
Elder's Wood Heating Program  
Elder's Gathering  
Senior & Male Youth Cultural Camp

PBCN Urban  
Pelican Lake First Nation  
Performing Arts Warehouse  
Peter Chapman Band  
Red Earth Cree Nation  
Shoal Lake Cree Nation  
SK Assoc For Community Living  
SK Assoc of Fire Chiefs  
Spinal Cord Injury SK  
Sturgeon Lake First Nation  
Sturgeon Lake First Nation  
Sturgeon Lake First Nation  
Wahpeton Dakota Nation  
Waterhen Lake First Nation  
Witchekan Lake Band

Urban Elder's Feast  
Treaty Gathering  
4th Annual Dance Blast 2017  
Elder's Gathering  
Elder's Gathering  
Community Elder's Trip  
PA Inclusion Luncheon  
SAFC 67th Annual Conference  
PREVAIL  
Engaging the Youth  
Youth & Adult Music Program  
Elder Programming  
Elder's Gathering  
Elder's Gathering  
Pow Wow 2016

OTHER

FIRST NATION/ORGANIZATION	PROJECT
Chakastaypasin Band	Reinstatement Strategic Planning
Fond du Lac First Nation	Appreciation Gifts
Jim Pattison Broadcast Group	Annual XFM Ball Breaker
Laplonge First Nation	Christmas Party
Montreal Lake Cree Nation	School Wall Photos
PA Lions Club	Operation Red Nose
PBCN Deschambault Lake	Annual Burbot Derby
Red Earth Cree Nation	Strategic Planning Review
Wahpeton Dakota Nation	Happy Family New Year
Wahpeton Dakota Nation	Family Unity

NLCDC ELIGIBLE PROGRAMS & EVALUATION STRUCTURE

All programs seeking funding from NLCDC must meet one or more of the following criteria:

- Involve partnership initiatives or joint ventures between First Nations and Non-First Nations
- Focus on economic development initiatives
- Focus on services that improve the education, social well being, and/or health of targeted youth, seniors and families
- Create training and/or employment opportunities
- Involve the community in project delivery or implementation
- Demonstrate cultural sensitivity/ awareness
- Are Early Intervention programs (i.e. Addiction Assessment and Treatment, Teenage Pregnancy. Stay in School programs)

